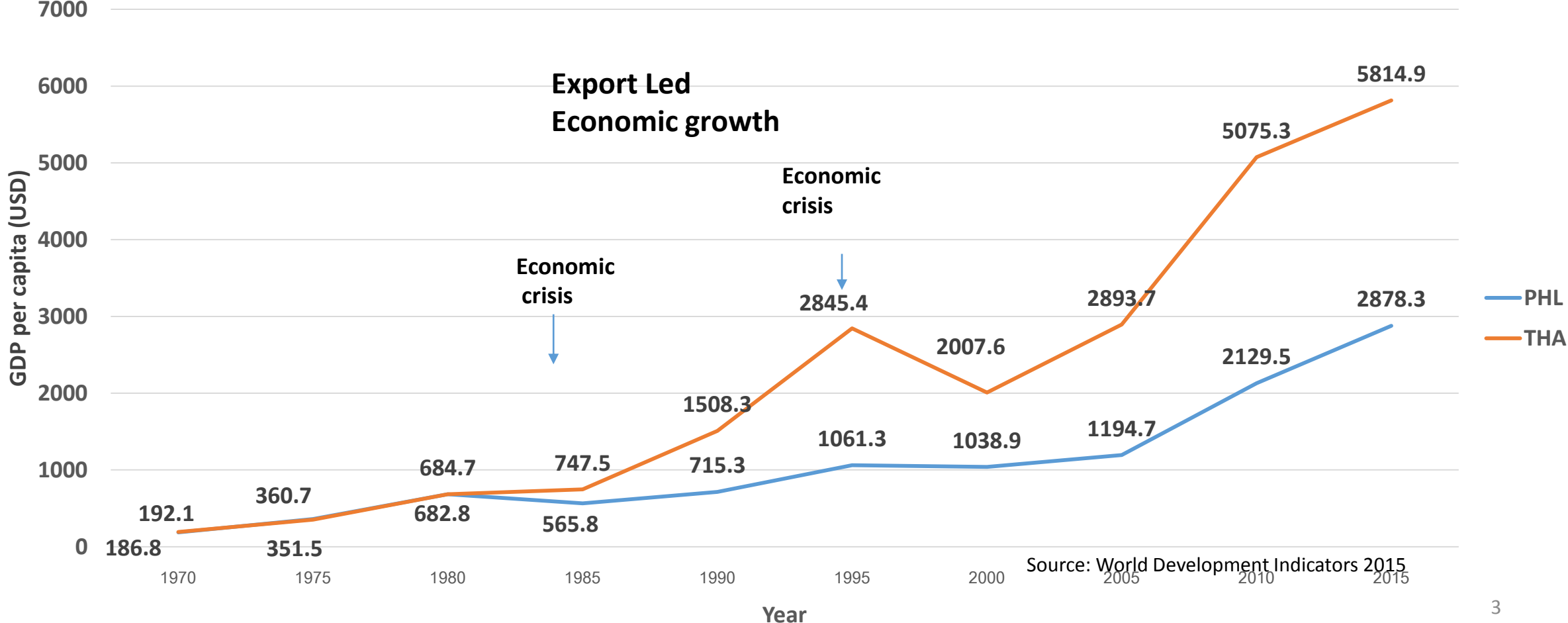


Key messages

- **Exports is the main economic engine** – International trade is essential to economic growth – GNI per capita increased 10 times in 40 years
- **Economic growth contribute to health** especially UHC – health budget increased from 4% of national budget in 1980s to 16/17% nowadays
- Although crude gini coefficient does not show significant improvement in income distribution, but after **redistribution by the public policies, especially UHC**, the gini may show improvement
- We have to negotiate FTAs, **but FTAs may not link to International Trade – so discuss with care** (TRIPS, ISDS, trade in bads, SPS/TBT, etc)
- Knowledge, capacity and partnerships – building long term **‘Trust’**

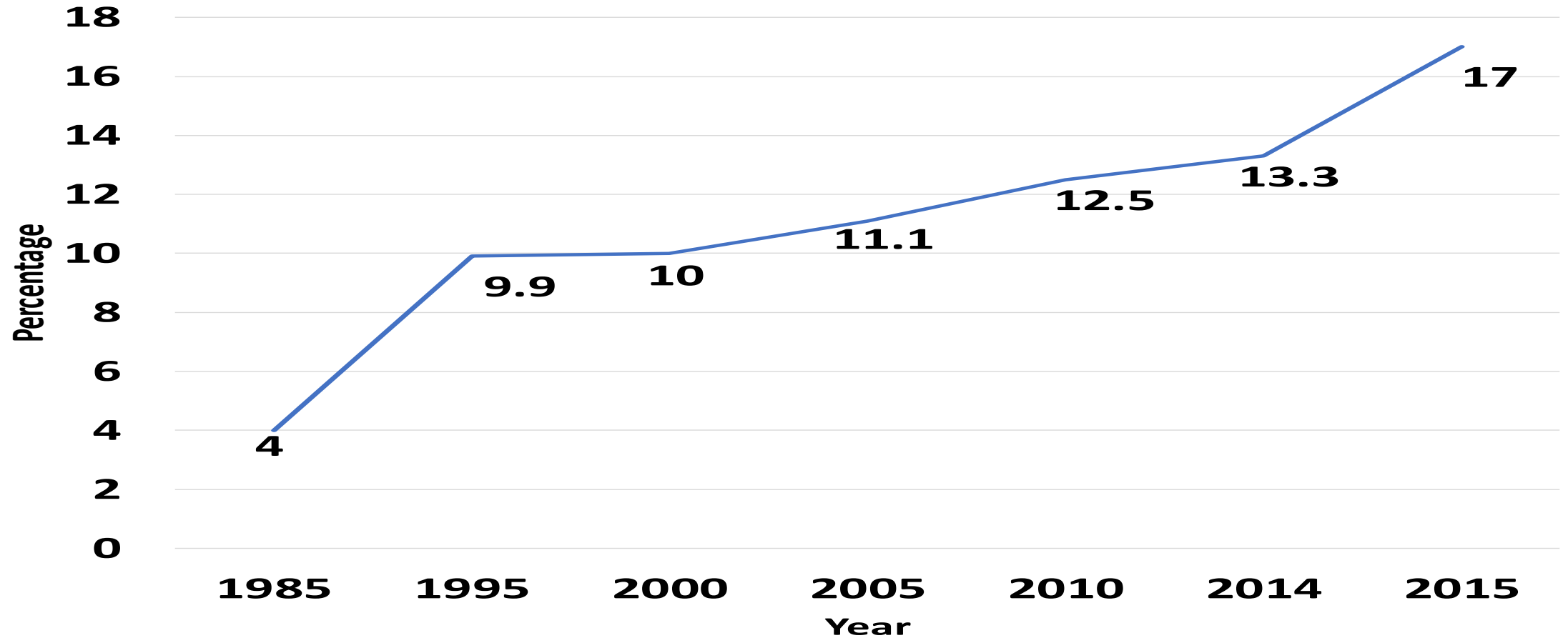
**1. Exports is the main economic engine – International trade is essential to economic growth – GNI per capita increased 10 times in 40 years**

**GDP per capita (USD)  
between Thailand and Philippines in 1970-2015**



## 2. Economic growth allows increasing fiscal policy for health

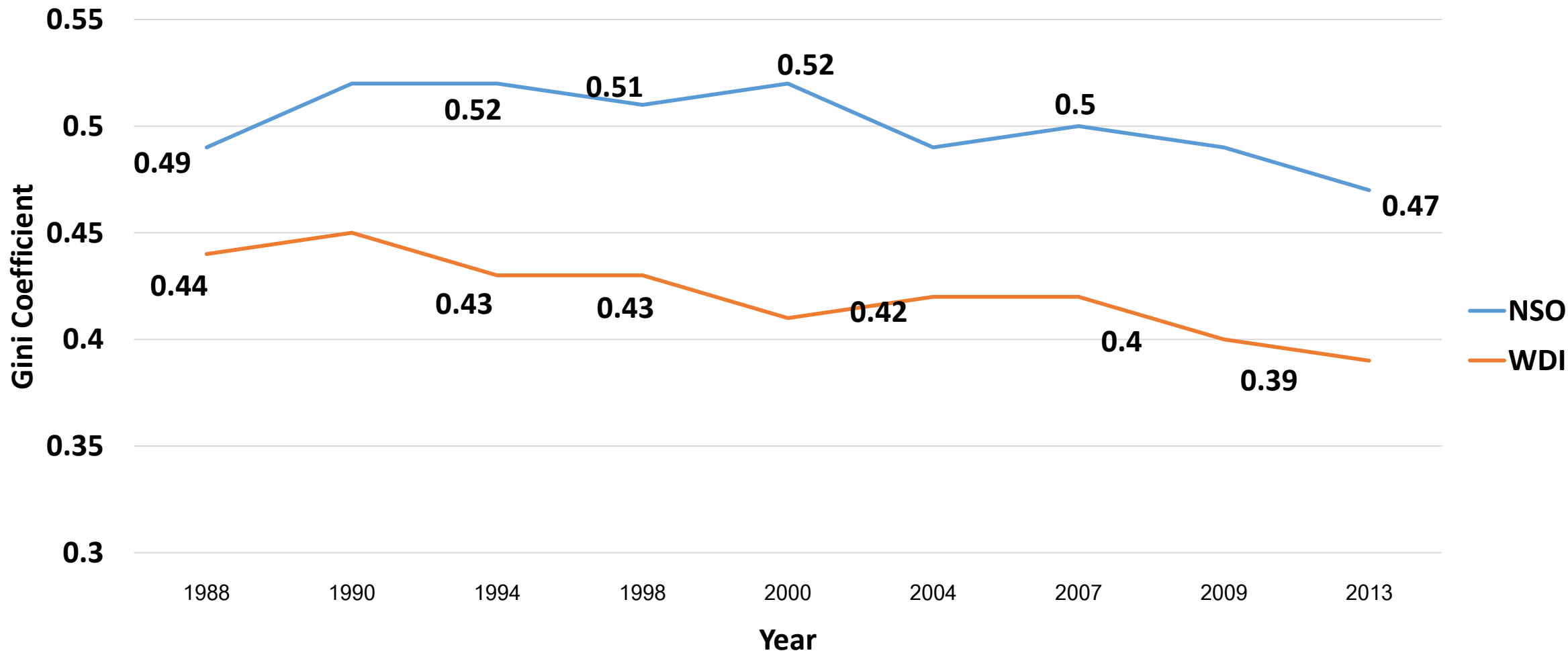
% of Total Government Expenditure on Health



Source of data: WDI, <https://data.worldbank.org/data-catalog/world-development-indicators> access Oct 31, 2017&NHA, 2013

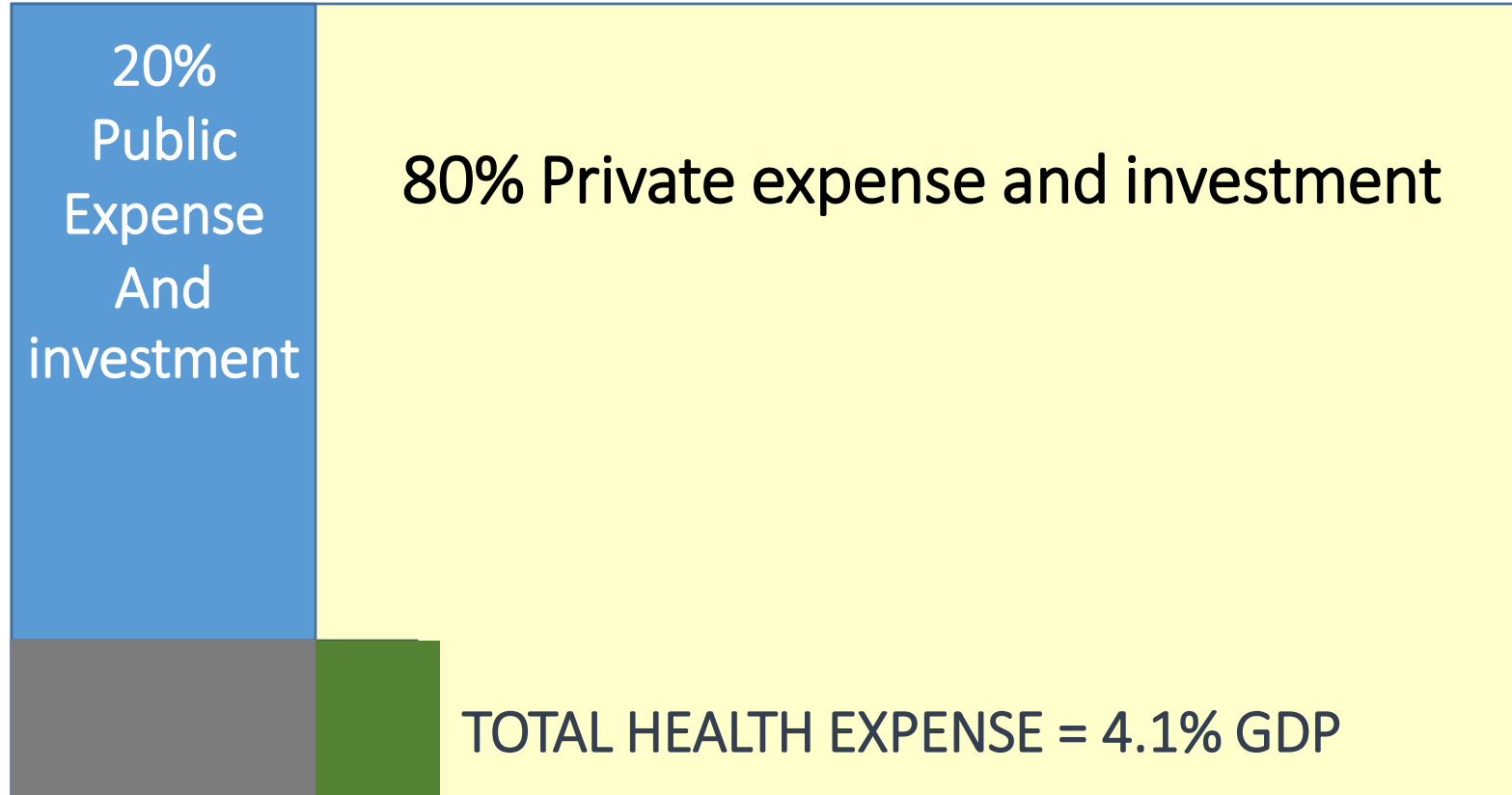
### 3. Good public policies can redistribute the income - Gini coefficient before and after redistribution

**Gini coefficient in Thailand, 1988-2013**



# Public Investment in Health is a good income redistribution Thailand

## GROSS DOMESTIC PRODUCTS



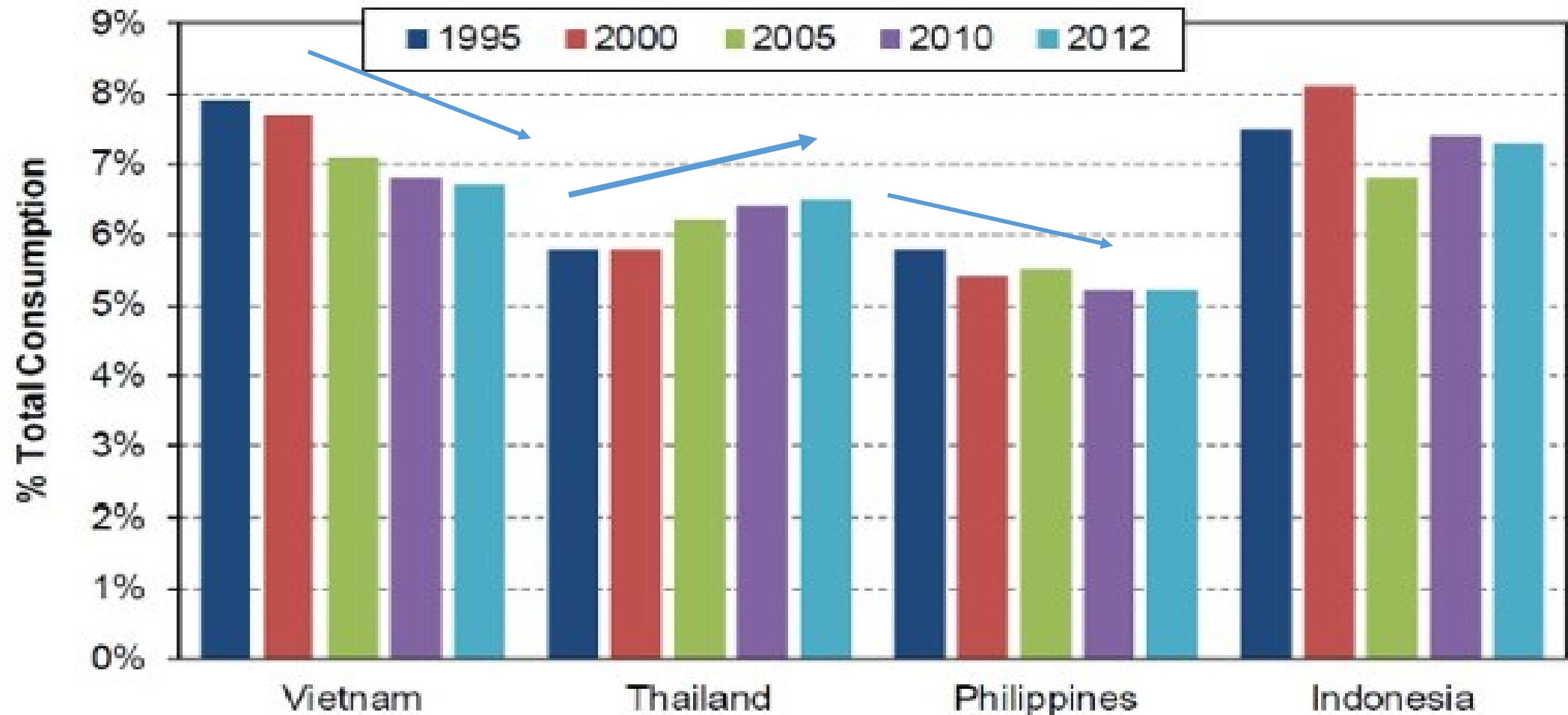
80% PUBLIC 20% PRIVATE (12% Households+8%employers)

= 17% GOVERNMENT EXPENSE

and 11% ALL UHC

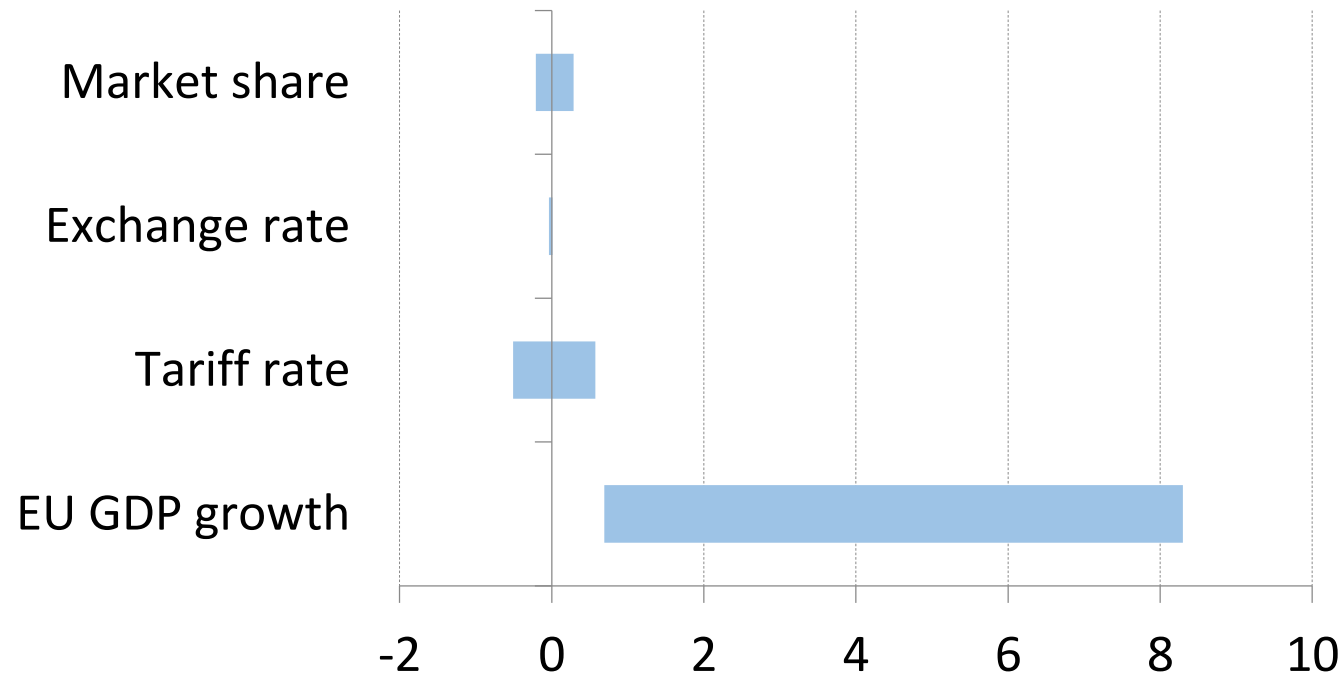
# UHC Increased consumption power of the lowest quintile

## Consumption of 20% Poorest



## 4. FTAs may not determine exports, so negotiate with care – prevention of long term permanent loss for unsure immediate gain, tactic of cutting the dogs tails

A confidence interval of determinants of Thai's export to EU



**Note:**

- The upper and lower bounds of a 95% confidence interval
- The confidence interval includes 0 means not a significant factor



## 5. Knowledge, capacity and partnerships are most essential

- Understand the different responsibilities and limitations – play different roles
- Generation and sharing of knowledge among partners, not only in Thailand
- Capacity based on INNE model – Networking is the top level of capacity
- Build trust among expanding members of the network of ITH

**Trust = (reliability+credibility+intimacy)/self interest**

**Thank u so much for all partners in and outside Thailand**